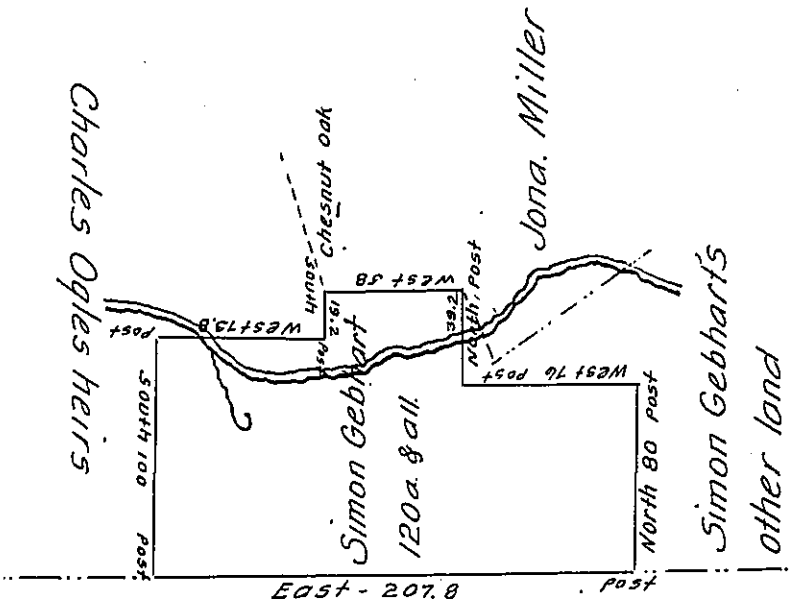


FORM NO 1.



J-o-h-n M-i-l-l-e-r.

Situate in Milford Township Somerset County and Surveyed March 12th 1840. in pursuance of a warrant dated the 16th day of April 1839.

To Jacob Sallade Esq^r } Pr. H. L. Holbrook Deputy-
Surveyor General }

IN TESTIMONY that the above is a copy of the original remaining on file in the Department of Internal Affairs of Pennsylvania, made conformably to an Act of Assembly approved the 16th day of February, 1833, I have hereunto set my Hand and caused the Seal of said Department to be affixed at Harrisburg, this fifth day of February 1908.

Henry Houder
Secretary of Internal Affairs.